

PART OF THE SW 1/4, OF SECTION 22 & SE 1/4, OF SECTION 21, T.5N., R.1W., S.L.B. & M.

633

BRIER POINTE NO. 2

IN SOUTH OGDEN CITY

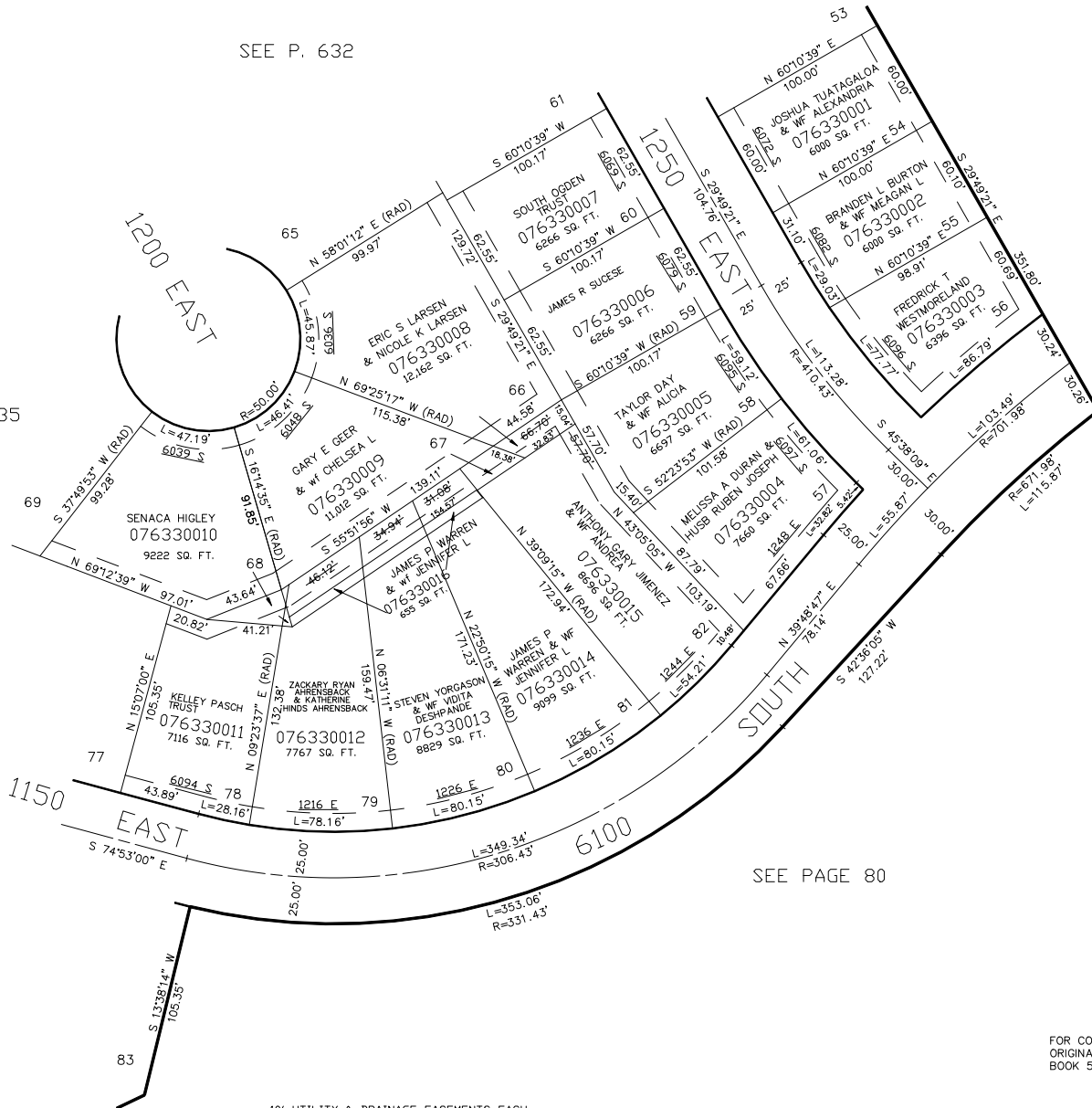
TAXING UNIT: 27

SCALE 1" = 50'

SEE P. 632

SEE PAGE 80

SEE PAGE 635



FOR COMPLETE ENG DATA SEE ORIGINAL DEDICATION PLAT IN BOOK 59, PAGE 11 OF RECORDS.

FOR TAX PURPOSES ONLY

KST 4-2004